

President's Message



We did a great job this month Thanks Volunteers!

Gainesville Koi Club did a fantastic job at the CFKS, we had plenty of man power, covered the

sponsorship for Best in Varieties, and did a fine job of showing off our Koi. Don Hellard's Ginrin Asagi got plenty of notice and some nice awards, not bad for an old gal. Of course our Hardcastle's did us proud and I didn't do too bad myself. Then there is a funny story behind the Baby Grand Champion that won, seems it's one of David's Kohaku's that he gave away! Ask him to tell you all about it when you see him next time.

The turnout for the Kanapaha Sale was great; we had just the right amount of people on Saturday to help wrangle fish. Plus we had plenty of fish thanks to Shirley Stone for some nice sized ones and David & Dori Peryera for tons of little guys (even if they did have to catch them twice). David Hardcastle brought some of his really nice baby Kohaku's to sell, although I don't think any of the public got many as most of the members snatched them up me included.

Shirley Stone has gotten everything lined up so she can fix her pond, so everyone who volunteered to help fish went out to her place this past weekend. We got well over 30 fish, and let me tell you she had some biggg girls in that pond, I think one of the "mid-size" was 29 inches. A spectacular catch was made by Shaun

when one of the Kujaku thought it could escape the net and made a leap for it -- only to jump right into Shawn's sock net. Oh to have had a video of that, nobody would believe how perfect that was! Of course, the next one made a fantastic 3 foot jump out of the net over the seine and home free into open water. Can't catch them all.

Woowee 3 fishy weekends in a row, I don't know about anybody else but I'm ready for a break.

See everybody at the next meeting on April 5th at Kanapaha, 2:00p.m. same fish time, same fish channel.

JOYCE



Reminder the Website is going to have a "for members only" section for those that are paid up. We have decided that the Newsletter is such a good recruiting tool that it will remain available to all.



Central Florida Koi Show

We had a great show this year. There were 186 koi entered and a few of our members took home top awards.

So **CONGRATULATIONS** go out to the following members:

Lee Aronfeld: GRAND CHAMPION, kohaku >28", Mature; kohaku 24 - 28" and (3) 1st place magnets.

Richard, Luanne, Blair & Natalie Porter: GRAND CHAMPION "B", utsuri >28", Best Yamabuki Ogon: hikari-muji 24 - 28", Size 6; kohaku 24 - 28", Best Longfin >16", and several magnets.

Henry Culpepper: RESERVE GRAND CHAMPION, showa >28", **Young Champion**, kohaku 16 -20", Jumbo Award, kawarigoi >28", Best in Variety, tancho >28", and a few magnets.

John Melz: BEST MALE, showa 20 - 24", Best in Variety, kawarigoi 20 -24", Gin Rin "B" 20 - 24", and some magnets.

Don Hellard: Show Directors Award, Gin Rin "B" 24 - 28", as well as (2) Friendship Awards.

Joyce Nichols: Size 3, utsuri, (1) Friendship Award and some magnets,

Ruth Nichols: Best in Variety, Gin Rin "A" 12 -16", some magnets and (2) Friendship Awards.

The Hardcastles: Size 5, kohaku 20 -24" and several magnets.

Ed Kellar: Size 1, showa <8", and some magnets.

Mike McMahon: Best in Variety, sanke 24 - 28", and magnets.

The Whites: Best in Variety, utsuri 20 -24" and some magnets.

Big round of applaude for these people...oh yeah, even though we don't own the Baby Champion, we did produce it and gave it to the young man who won it back in October at the First Coast Show.

Grand Champion
Lee Aronfeld
Size 7 - Kohaku



Grand Champion "B"
Richard & Luanne Porter
Size 7 - Utsuri



Reserve Grand Champion
Henry Culpepper
Size 7 - Showa



Mature Grand Champion
Lee Aronfeld
Size 6 - Kohaku



Young Champion
Henry Culpepper
Size 4 - Kohaku



Baby Champion
Jeffery Tupper
Size 2 - Kohaku



Gin Rin "B"

Don Hellard
Show Directors Award



Best in Size 3

Joyce Nichols



Upcoming Events



April 25th - North Florida Koi Club Longfin Show & Koi Auction. For More Information Call: Todo Todorsky - 904-724-7015 pondfish@bellsouth.net or Jan Brown - 904-269-2504

May 2nd & 3rd – Nature’s Coast 7th Annual Young Koi Show at Old Town. For more info contact pelbay@bellsouth.net



May 1st thru 3rd – Middle Georgia Koi Society Koi & Goldfish Show at **Bryon, GA**. For more info or registration, go to <http://www.middlegakoisociety.com/>

Sep 18 thru 20 - Annual Atlanta Koi & Goldfish Show at Tucker, GA. For more information or registration, go to <http://www.atlantakoiclub.org/>



Oct 10 thru 11 – Kanapaha Fall Sale & Gainesville Fish Sale. Contact GKC Officers to Volunteer for Sale. For more information, about the plant sale go to <http://www.kanapaha.org/calendar.htm>



Club Meetings

Club Meetings

Held at Kanapaha Gardens:

April 5th
June 7th
August 2nd
September 6th

Special Events:

April/May – fish harvest at member’s pond – TBA (1 down, 1 to go)

June – Hopefully Field trip to Blackwater Creek with other area clubs.

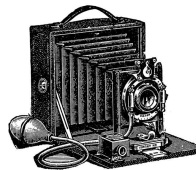
July 5th – Garage & Fish Sale. Volunteers needed and your junk to sell.

October 10th & 11th – GKC Fish Sale. Volunteers needed and fish to sell.

November – Annual BBQ

December 5th – Annual Xmas party

Hey Members share your day with us!



Got something special going on, need help that only Koi people can provide, or just want to brag a little – Send in your clip for the “Members Happenings” for the newsletter or on the Pondhoppers website. E-mail your stuff to Joyce Nichols at koigirlfl@yahoo.com

18" Heavy Duty Vacuum Head



Somebody at the Central Florida Show liked my Longfin so much they decided to make a tattoo of it. Wish I would have gotten their name, I'd like to see it when it's done.

Joyce

Up for Grabs!!



We have 3 items donated to the club that are up for grabs to the highest bidders. They can be inspected at Don's house if you need. Send your bids in to Don Hellard by email dhellard@bellsouth.net


The winner will be announced at the April Meeting.

LINCOLN

18" Heavy Duty vacuum head

Item #:	28-025	Price:	\$259.75
Ship Qty:	1 EACH	Catalog Page:	62
Ship Weight:	16 lbs.		

Qty: [Add to Cart](#)



18" HEAVY DUTY VACUUM — All metal vacuum head designed specifically for commercial use. Housing made of chrome, bronze and anodized aluminum. Handle is all stainless steel. Fits both 2" or 1 1/2" vacuum hose.

Lincoln Equipment, Inc.
2051 Commerce Ave. • Concord, CA 94520 USA
Ph. (800) 223-5450 / Fax (888) 680-2825 • Int'l. (925) 687-9500 / Fax (925) 680-2825
California Corporate Office Hours - Monday-Friday 7:00am - 5:00pm PST

LINCOLN-equipment.com

50th Anniversary 1958-2008 LINCOLN

18" Heavy Duty Brush

LINCOLN

Heavy Duty vac 18" brush

Item #:	28-040	Price:	\$23.50
Ship Qty:	1 EACH	Catalog Page:	62
Ship Weight:	1 lbs.		

Qty: [Add to Cart](#)

NO IMAGE AVAILABLE

HEAVY DUTY REPLACEMENT PARTS

Lincoln Equipment, Inc.
2051 Commerce Ave. • Concord, CA 94520 USA
Ph. (800) 223-5450 / Fax (888) 680-2825 • Int'l. (925) 687-9500 / Fax (925) 680-2825
California Corporate Office Hours - Monday-Friday 7:00am - 5:00pm PST

LINCOLN-equipment.com

50th Anniversary 1958-2008 LINCOLN


2"x50' Heavy Duty Hose

LINCOLN

Heavy duty vac hose, 2" x 50'

Item #:	29-080	Price:	\$401.25
Ship Qty:	1 EACH	Catalog Page:	53
Ship Weight:	28 lbs.		

Qty: [Add to Cart](#)



LINCOLN HEAVY DUTY VACUUM HOSE — Commercial grade, floating hose. Extremely rugged, crushproof, leakproof and flexible. Custom lengths available. Our best hose.

Lincoln Equipment, Inc.
2051 Commerce Ave. • Concord, CA 94520 USA
Ph. (800) 223-5450 / Fax (888) 680-2825 • Int'l. (925) 687-9500 / Fax (925) 680-2825
California Corporate Office Hours - Monday-Friday 7:00am - 5:00pm PST

LINCOLN-equipment.com

50th Anniversary 1958-2008 LINCOLN

Talking about koi, **koi-dangi (koi dan gee)** Say what?



Oh wow a Koi Show; you and your friends just have to go. There are a lot more varieties to see then what you have in your pond. Hey that Kohaku is all shiny. You're told that's a metallic scale and the scales come in different patterns or colorbase and are either Ginrin or Kinrin. Depending on the variety the Koi are called Hikari-Moyo, Hikari-Muji, or Hikari-Utsuri. There are even Koi with no scales called Doitsu. Say What!

That's right you have to know about scale patterns as well as color patterns to keep some of those names straight. Don't worry there really aren't that many.

This time around I'll show you the different scale patterns along with another set of Koi Varieties. You are on your way to amazing the pro.

In trying to pronounce these Japanese terms, please remember that:

- The letter "R" is sometimes pronounced like the letter "L" in English.
- The Japanese pronunciation for the letter "I" is similar to the English pronunciation for the long "E", as in the word "see."
- In this guide the Japanese letter "G" is a hard sound similar to its sound in the English words, "get" or "give."
- Japanese vowels are pronounced as follows: a as ah like pa, e as eh like lend, i as ee like bee, o as oh like oak, u as uu like moo, ai as eye like pie, ei as aye like plate.
- The **accented syllable** is in **ALL CAPITAL LETTERS**.

The following guide is from various sources online that describe what the term means and how it relates to Koi. I have grouped the guide by the varieties and specific terms used with them, followed by some common terms.

Koi Varieties:



Hikarimono or Hikari-Muji (HEE-kah-ree-MOE-noh / HEE-kah-ree moo'jee) Show classification for metallic Koi of a single color and metallic Koi with a matsuba scale pattern. **Commonly know as Ogon and Matsubas**

- [Yamabuki Ogon](#) (yah-mah-**BOO**-kee oh-**GOHN**) - Metallic yellow/gold Koi, can range from bright yellow to a soft cream
- [Purachina Ogon](#) (puRA-cheeNA oh-GOHN) - Metallic platinum or silver Koi
- [Orenji Ogon](#) (ohr-in-**JEE** oh-GOHN) - Metallic solid orange Koi
- [Cream Ogon](#) (kreem oh-GOHN) - Metallic cream Koi
- [Nezu Ogon](#) (nay-**ZOO** oh-GOHN) - A silver grey color koi that has a dull metallic luster, clear head and even scalation
- [Kin Matsuba](#) (ken maht-**SOO**-bah) - Metallic gold or yellowish Koi with the center of each scale being black giving an appearance of a net pattern
- [Gin Matsuba](#) (gen maht-**SOO**-bah) - Metallic silver Koi with the center of each scale being black giving an appearance of a net pattern



Hikari Utsurimono (HEE-kah-ree **OOT** sir-Ee -**MOE**-noh) Show classification for Metallic Showa and Utsuri.

- [Kin Showa](#) (ken **SHO**-wah) - Metallic Showa of red/orange, black and white in various patterns
- [Gin Showa](#) (gen **SHO**-wah) - Same as Kin Showa but with predominantly metallic silver color
- [Doitsu Kin Showa](#) (**DOYT**-suh ken **SHO**-wah) - Same as Kin Showa but with doitsu scales, comes in various patterns
- [Kin Hi Utsuri](#) (ken hee **OOT** sir-Ee) - Metallic Hi Utsuri that is red and black in color
- [Kin Ki Utsuri](#) (ken kee **OOT** sir-Ee) - Metallic Ki Utsuri that is bright gold and black
- [Gin Shiro Utsuri](#) (gen **SHEER**-oh **OOT**-sir-Ee) - Metallic Shiro Utsuri, black markings on a silver body form the same patterns as an Utsuri



Hikarimoyo mono (HEE-kah-ree moy-yo-**MOE**-noh) Show classification for all metallic multi-colored Koi with more than two colors except Showa and Utsuri varieties.

- [Yamato-nishiki](#) (yah-**MAHT**-oh neesh-**KEE**) - Metallic Sanke with a platinum or silver skin with Hi and Sumi markings
- [Hariwake](#) (ha' ree wah keh)- A Metallic koi of platinum and either orange, lemon or gold markings. They can be fully scaled, doitsu, matsuba or doitsu matsuba
- [Doitsu Lemon Hariwake](#) (**DOYT**-suh **lem-uhn** ha' ree wah keh) - Same as Hariwake but with doitsu scales. Another example [Doitsu Lemon Hariwake](#)
- [Yamabuki Hariwake](#) (yah-mah-**BOO**-kee hah-ruh-**WAH**-kee) - A silver koi with metallic yellow markings which should be balanced over the body
- [Orange Hariwake](#) - Same as the Yamabuki Hariwake but with orange markings that should be deep and metallic
- [Kikusui](#) (**KEE**-koo-soo-ee)- Means "Chrysanthemum Water". A platinum koi with deep gold or orange in various patterns. Head should be platinum and is always doitsu
- [Kujaku](#) (koo-**JAH**-koo) - Metallic "Peacock" They are platinum with Hi markings that normally cover a large proportion of the body. Scales are overlaid with matsuba or (black pinecone pattern) and can also come in yellow or orange shades. Here are two other examples [Kujaku](#) [Kujaku](#)
- [Kinsui/Ginsui](#) - Metallic Shusui. Kinsui being blue with some red markings and doitsu scales, Ginsui being sky blue with doitsu scales
- [Gin Shiro Bekko](#) (Gen **SHEER**-oh beh-**KOH**) - Metallic Shiro Bekko, platinum skin with sumi markings as those on the Shiro Bekko
- [Heisei-Nishiki](#) (**HAY** say **NEESH**-kee)- Doitsu version of the Yamatonishiki. A metallic Sanke with a platinum or silver skin with Hi and Sumi markings
- [Doitsu Kujaku](#) (**DOYT**-suh koo-**JAH**-koo) - Same as Kujaku but with doitsu scales. Can come in many colors and patterns



Gin Rin & Kin Gin Rin - literally means golden silvery scales and refers to the sparkling effect of the scales which appears golden over Hi and silver over white and sumi. It gives an iridescence in individual scales rather than an overall metallic luster. Koi must have over 20 scales to be considered Gin Rin. There are four types of scales, namely Pearl, Ginrin, Beta-gin, Diamond Ginrin and Kado-gin.

KINGINRIN (GROUP 1)

- [Kinginrin Kohaku](#) - Same as a Kohaku but with Ginrin Scales
- [Kinginrin Sanke](#) - Same as a Sanke but with Ginrin Scales
- [Kinginrin Showa](#) - Same as a Showa but with Ginrin Scales

KINGINRIN (GROUP 2) All of the koi below are the same as what is listed in the above categories except that they all have Gin Rin Scalation which can appear as any of the four different types of scales.

- [Gin Rin Hariwake](#)
- [Gin Rin Chagoi](#)
- [Gin Rin Soragoi](#)
- [Gin Rin Ochiba](#)
- [Gin Rin Yamabuki Ogon](#)
- [Gin Rin Tancho Kujaku](#)
- [Gin Rin Tancho Kohaku](#)
- [Gin Rin Maruten Kohaku](#)
- [Gin Rin Benigoji](#)
- [Gin Rin Asagi](#)

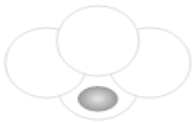
Ginrin

Sparkling scales, also known as kinginrin.
There are four types of ginrin.



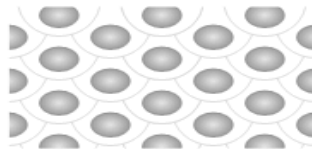
Diamond Ginrin

Ginrin rays that go to the end of the scale. Probably the common version of ginrin.



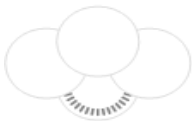
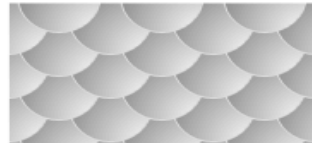
Pearl Ginrin

Round ginrin centered in the middle of the scale



Beta Ginrin

Ginrin covers the entire scale





Kado Ginrin

Ginrin covers only on the edges of the scale



References

-  <http://koi.com/reference/encyclopedia/> has audio
-  http://www.japan-nishikigoi.org/dictionary_a.html

2009 OFFICERS

- President:** Joyce Nichols, 352-337-6652
Email: koigirlfl@yahoo.com
- Vice-President:** David Hardcastle, 904-964-7394
Email: wavenbye@embarqmail.com
- Alt. Vice-Pres:** Ed Keller,
Email: emkellar@mactec.com
- Treasurer:** Don Hellard, 352-331-1268
Email: dhellard@bellsouth.net
- Secretary:** Karen Hardcastle, 904-964-7394
Cell no: 352-359-3368
Email: wavenbye@embarqmail.com
- Librarian:** Ed Keller
- Newsletter Editor & Webmaster:** Joyce Nichols

Happy March Birthdays



- ShirleyAnn Scarabino 4/7**
Art Manaker 4/16
Ralph Rothschild 4/29
Richard Thompson 4/30

Economy Restaurant Services

hot side repairs/installations
(352) 466-3335

Get a Grip on Your Bottom Line!



Gary Bullis - Owner/Tech. economyrestaurantservices@gmail.com

Mazuri.

The Exotic Animal Feeding Resource

EXOTICS RULE OUR ANIMAL KINGDOM

MAZURI® KOI DIETS:

- Top quality fish and soy protein
- Complete and balanced nutrition
- Astaxanthin, canthaxanthin, spirulina, shrimp and beta-carotene for brilliant color
- Each bag is date coded for guaranteed freshness and is produced in the United States



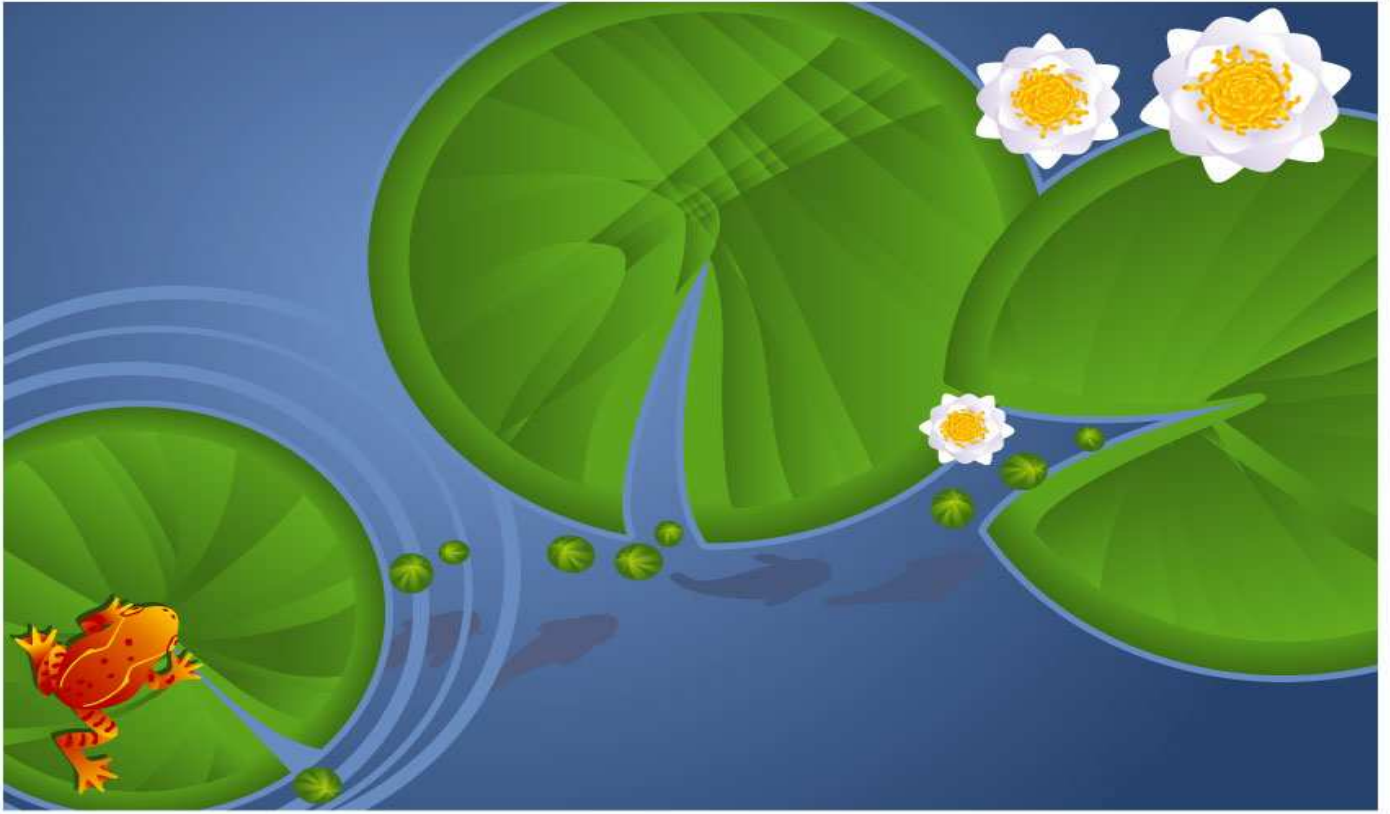
MAZURI® KOI DIETS:

Koi Platinum Ogata, Koi Platinum Wheat Nuggets
Koi Platinum Nuggets, Koi Pond Nuggets
Koi Platinum Bits

For your nearest dealer or to order online,
call 1-800-227-8941 or visit us at

www.Mazuri.com





Gainesville Koi Club
Joyce Nichols
6631 SW 84th Street
Gainesville, FL 32608

***NEXT MEETING
APRIL 5TH 2:00P.M.
KANAPAHA GARDENS***